

# BEAVER CREEK PLAINSMEN, INC. 42nd ANNUAL BLACK POWDER SHOOT JULY 26, 27, 28, 2019



LOCATION: BEAVER CREEK PLAINSMEN RANGE  
10842 North 103<sup>rd</sup>, Collins, IA 50055

Range located on the Larry Beal's Farm, Off Hwy 330, 3 miles North of Jct 65/330.  
Watch for Signs

## RANGE HOURS

Friday, July 26 - 9:00 a.m. to 5:00 p.m.

Saturday, July 27 - 8:00 a.m. to 5:00 p.m.

Sunday July 28 - 8:00 a.m. to 12:00 noon

No Targets Sold after 10:00 a.m. on Sunday

## OTHER EVENT DAYS AND TIMES

Sat - Prairie Walk - 8:00 a.m. to 11:00 a.m. (also Sunday)

Sat only - Hawk & Knife Throw 11:30 a.m. Men, Ladies, Youth over age of 7

Sat only - Shot Gun Matches BP/Cart, - 1:00 p.m. to 4:30 p.m.

Sun - Prairie Walk - 8:00 a.m. to 11:00 a.m.

Sunday Protest time; Begins after last target scored and posted for 15 minutes.  
Awards to follow as soon after as possible.

## SHOOTING FEES

Shoot All Events for \$40.00

Championship Aggregates - Men/Women/Intermediate - Matches 1-7 \$20.00  
(Intermediate Ages - 15 years and not reach 18<sup>th</sup> birthday)

Shoot Individual Events \$15.00 each

Junior Shooters (14 and Under) Shoot Matches 1-5 \$5.00

Juniors Shooters Cross Sticks with Adult Supervision (over 21) at all times

Junior Shooters Prairie Walk with adult supervision at all times - \$5.00 each

FOR MORE INFORMATION CONTACT:

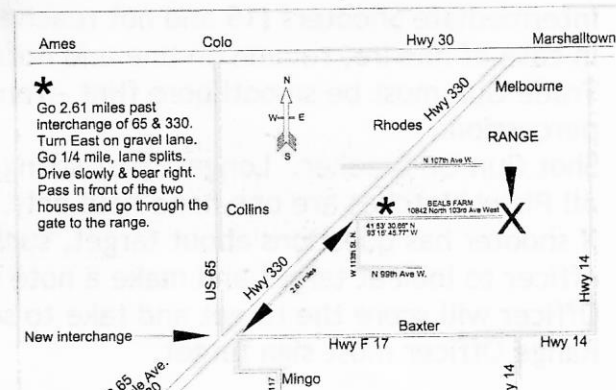
Bob Berger, President 515-707-9740

Norma Holcomb, Sec-Tres 515-262-4712

or Cell 515-979-3446

Charlie Bilbrey 641-431-0205

Jack Patton - 515-401-8796



### HAWK & KNIFE THROW

No Youth Under Age of 7 to Throw Hawk at any time  
Youth 7-16 must have parent or adult (over 21) supervision present at all times.  
Youth hawk only. No knife throw. Youth pays \$1.00 fee  
All non-registered shooters pay \$2.00 to throw hawk and \$2.00 knife.  
For safety reasons no hawk practicing except with adult parent or adult over 21  
presents at all times.  
First Place Awards Only

### AWARDS

First Second and Third Place Awards (Medallions) given except where indicated.

### PRIZE BLANKET

All shooters (Men/Women/Intermediates) will pick from prize blanket starting with highest scores to last while prizes last. Separate prize blanket for youth.

### RANGE RULES - NMLRA RULES APPLY (EXCEPT AS NOTED)

No Re-entry. ALL targets must be posed in upright position. Decision of Range Office is Final.  
Gun Caliber limited to no larger than .690 for steel targets on Prairie Walk.  
No loading on firing line. No handling of firearms while people are down range posting targets.  
20 Minutes relays, unless otherwise stated. 10 minutes between relays. Can only leave target posted for relay, if you don't check it. And you must advise range officer. After 2 relays office will pull target.  
One-gun entry for aggregate.  
No alcoholic beverage on range.  
Black Powder or Pryodex and Round Ball only. Cartridge - lead only = no jacket. No Duplex loads.  
Shoot only number of shots indicated.  
Open iron sights only for muzzleloaders, tang sights, hooded front sights can be used for cartridge guns.  
No slings. No scopes or binoculars on or near range.  
NO SMOKING on firing line or loading areas.  
Cap prime on firing line only.  
Practice target at 25 yards only. 50 yards practice target for cartridge rifles.  
Flintlock shooters must warn nearby shooters of pending flash.  
Junior shooters (14 and under) must use cross sticks with adult supervision. No exceptions.  
\$5.00 fee for Junior shooters to shoot Prairie Walk.  
Intermediate Shooters (15 and not reached 18<sup>th</sup> birthday) will shoot offhand.  
In case of misfire, remain on line and notify range officer.  
Trade Gun must be smoothbore flint -front sights only. Sighted Smoothbore can be flint or percussion.  
Shot Gun tie breaker. Longest first string. If still a tie shoot until miss. See NMLRA Rule 80008  
All Pistol Matches are one hand hold only.  
If shooter has questions about target, such as 2 balls in one hole, do not pull target but get range officer to look at target and make a note of what he sees by looking at the back plastic. Range Officer will score the target and take to scoring shack. Scoring people will be rescore the target.  
Range Officer must sign target.

**AWARDS** First. Second and Third Place Awards (Medallions) given where indicated.

**PRIZE BLANKET** All shooters (Men/Women/Intermediates) will pick from prize blanket starting with highest scores to last while prizes last. Separate prize blanket for youth.

**Agg Championship Matches 1-7 Men, Ladies, Intermediate Offhand only Flint or Percussion**

<u>Match</u>	<u>Distance</u>	<u>Position</u>	<u>Target</u>	<u>Shots</u>	<u>Max Score</u>
1	15 yds	Offhand	String	1	10
2	25 yds	Offhand	V	5	50
3	25 yds	Offhand	Turkey Head	5	50
4	25 yds	Offhand	6 bull target (SB1)	5	50
5	50 yds	Offhand	2 bull Buffalo (Buf 2)	5	50
6	50 yds	Offhand	Standing Bear	5	50
7	100 yds	Offhand	Large Bull (YD-7)	5	50

**Junior Aggregate - Matches 1-5 Ages 14 and under \$5.00 fee Must use cross sticks**

<u>Match</u>	<u>Distance</u>	<u>Position</u>	<u>Target</u>	<u>Shots</u>	<u>Max Score</u>
1	15 yds	Cross Sticks	String	1	10
2	25 yds	Cross Sticks	V	5	50
3	25 yds	Cross Sticks	Bulls Eye	5	50
4	25 yds	Cross Sticks	Bulls Eye	5	50
5	50 yds	Cross Sticks	Standing Bear	5	50

**Flintlock Aggregate - Matches 8-10A**

<u>Match</u>	<u>Distance</u>	<u>Position</u>	<u>Target</u>	<u>Shots</u>	<u>Max Score</u>
8	25 yds	Offhand	Vertical Ground Hog #201	5	50
9	25 yds	Offhand	Running Fox #701	5	50
10	50 yds	Offhand	Single Buffalo (Buf-1)	5	50
10A	100 yds	Offhand	Large Bull Target (YD7)	5	50

**Pistol Aggregate - Matches 11-12A (Men/Women, Flint or Percussion. One Hand Hold Only)**

<u>Match</u>	<u>Distance</u>	<u>Position</u>	<u>Target</u>	<u>Shots</u>	<u>Max Score</u>
11	25 yds	Offhand	Single Bull (P-2)	10	100
12	50 yds	Offhand	Single Bull (P-1)	10	100
12A	25 yds	Offhand	Single Bull (YD1)	10	100

**Cartridge Aggregate - Matches 13-15**

<u>Match</u>	<u>Distance</u>	<u>Position</u>	<u>Target</u>	<u>Shots</u>	<u>Max Score</u>
13	50 yds	Offhand	Single Bull 100 Yd (YD-1)	10	100
14	100 yds	Offhand	Single Bull 100 Yd (YD-7)	10	100
15	200 yds	Offhand	Single Bull (200 YD1)	10	100

**Prairie Walk - Match 16 Men/Women/\* Juniors (Limit - no larger than 69 caliber gun)**

Sat - 8:00 a.m. to 1:00 p.m. Sun 8:00 to 11:00 No Start after 10:30 a.m.

\*Juniors must use cross sticks with adult supervision. No exceptions) \$5.00 fee

**Shot Gun Match 17 - Sat 1:00 to 4:30 only**

**Muzzleloading-15 SHOTS and BP Cartridge Shotgun-25 SHOTS**

Note: Tie breaker is longest first string. If still a tie shoot off until miss

Trade Gun Aggregate - Matches 18-19B Must be smooth bore flint - front sights only!

<u>Match</u>	<u>Distance</u>	<u>Position</u>	<u>Target</u>	<u>Shots</u>	<u>Max Score</u>
18	25 yds	Offhand	Standing Ground Hog	5	50
19	25 yds	Offhand	Running Deer	5	50
19A	50 yds	Offhand	1 Bull buffalo	5	50
19B	100 yds	Offhand	200 yd target	5	50

Musket Aggregate - Matches 20-22 As issue sights on approved musket.

NMLRA rules/regulations Can shoot round ball or bullets. 2 relays

<u>Match</u>	<u>Distance</u>	<u>Position</u>	<u>Target</u>	<u>Shots</u>	<u>Max Score</u>
<b>20</b>	<b>25 yds</b>	<b>Offhand</b>	<b>6 bull target (SB7)</b>	<b>5</b>	<b>50</b>
21	50 yds	Offhand	2 Bull Buffalo	10	100
22	100 yds	Offhand	200 yd target at 100 yds	10	100

Black Powder Cartridge Pistol Aggregate - Matches 23-24 (Type of pistol prior to 1890)

No Adjustable Sights

<u>Match</u>	<u>Distance</u>	<u>Position</u>	<u>Target</u>	<u>Shots</u>	<u>Max Score</u>
23	25 yds	Offhand	Single Bull (P-2)	10	100
24	50 yds	Offhand	Single Bull (P1)	10	100

Inline (Only) Matches 25-28

Any sights, including scopes, ball, bullet or sabots.

<u>Match</u>	<u>Distance</u>	<u>Position</u>	<u>Target</u>	<u>Shots</u>	<u>Max Score</u>
25	25 yds	Offhand	6 bull target (SB1)	5	50
26	50 yds	Offhand	Running Fox (#701)	5	50
27	100 yds	Offhand	Large Bull target (YD7)	5	50
28	200 yds	Offhand	Single Bull (200 YD1)	5	50

Light Bench -Matches 29-32

14 pound rifle limit, Any Metallic Sights, Bench or Cross Sticks

<u>Match</u>	<u>Distance</u>	<u>Position</u>	<u>Target</u>	<u>Shots</u>	<u>Max Score</u>
29	50 yds	Bench/Cross Sticks	6 bull target (SB7)	5	50
30	50 yds	Bench/Cross Sticks	5 Bull Buffalo	5	50
<b>31</b>	100 yds	Bench/Cross Sticks	2 Bull Buffalo (Buf 2)	5	50
32	100 yds	Bench/Cross Sticks	Single Bull (YD1)	5	50

Sighted Smoothbore Agg - Matches 33-36 - Flintlock or Percussion, fixed Open Sights, (front and rear). No limitations on caliber. Offhand

<u>Match</u>	<u>Distance</u>	<u>Position</u>	<u>Target</u>	<u>Shots</u>	<u>Max Score</u>
33	25 yd	Offhand	6 Bull Target (SB7)	5	50
34	25 yds	Offhand	5 Bull buffalo	5	50
35	50 yds	Offhand	Single Bull Buffalo	5	50
36	100 yds	Offhand	200 yd Target @ 100	5	50

Primitive - Tents - Tin-Tipi Camping Available - No Camping Fee - No Electric  
 Fire Wood Available - Bring Own Drinking Water and Ice  
 Food Shack Available

Traders Welcome - No Traders Fee

**CHILI SUPPER ON SATURDAY NIGHT FOR ALL SHOOTERS AND FAMILY**

THINK SAFETY AT ALL TIMES!!  
 HAVE FUN!!